

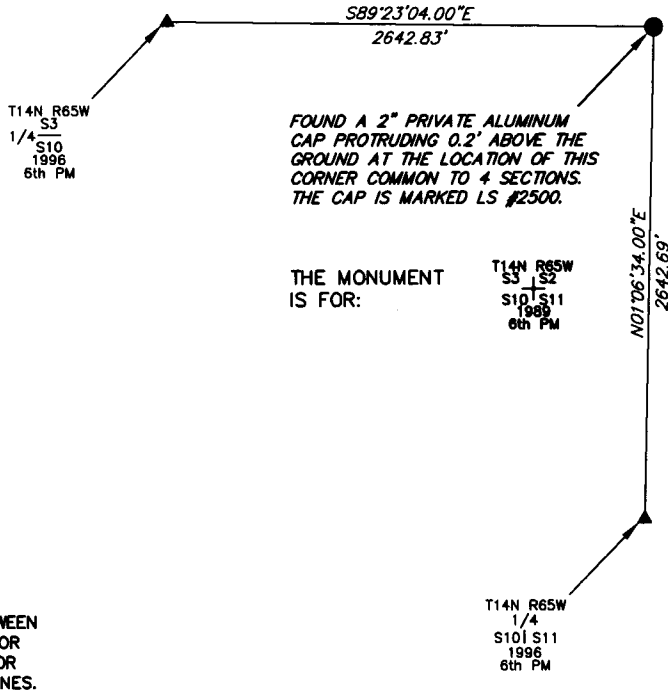
# State of Wyoming Corner Record

## CORNER PERPETUATION AND FILING ACT,

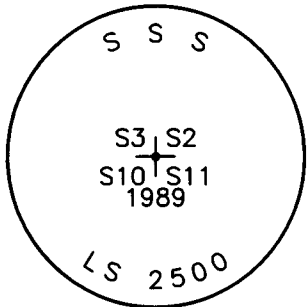
Regulations of the Board of Registration for Professional Engineers and Land Surveyors.)

Reverse side of this form may be used if more space is needed.

Record of original survey and citation of source of historic information (if corner is lost or obliterated). Description of corner monumentation evidence found and/or monument and accessories established to perpetuate the location of this corner. Sketch of relative location of monument, accessories, and reference points with course and distance to adjacent corner(s) (if determined in this survey). Method and rationale for reestablishment of lost or obliterated corner.



NOTE:  
LINES SHOWN ARE BETWEEN  
MONUMENTS AND MAY OR  
MAY NOT BE SECTION OR  
SECTION SUBDIVISION LINES.



THE MONUMENT IS MARKED

### CORNER MONUMENT SYMBOLS

- RECORD IS FOR THIS CORNER MONUMENT.
- ▲ A RELATED CORNER OR WC MONUMENT.

↑

SCALE 1"=1000'  
(EXCEPT IN TRIVIAL CASES)  
BEARINGS ARE RELATED TO WGS 84 WITH GPS OBSERVATIONS  
DRAWN BY: SM  
P.C. D. SWANSON  
COUNTY: LARAMIE

Date of Field Work: 01/30/2014 Office Reference: \_\_\_\_\_

### CROSS INDEX DIAGRAM

1	2	3	4	5	6	7	8	9	10	11	12	13	14	15	16	17	18	19	20	21	22	23	24	25	
A																									A
B																									B
C		6			5				4					3					2						C
D																									D
E																									E
F																									F
G			7			8			9					10					11						G
H																									H
J																									J
K																									K
L				18			17			16				15					14						L
M																									M
N																									N
O																									O
P				19			20			21				22					23						P
Q																									Q
R																									R
S																									S
T				30			29			28				27					26						T
U																									U
V																									V
W																									W
X				31			32			33				34					35						X
Y																									Y
Z	1	2	3	4	5	6	7	8	9	10	11	12	13	14	15	16	17	18	19	20	21	22	23	24	Z

Firm/Agency, Address

UELS, LLC

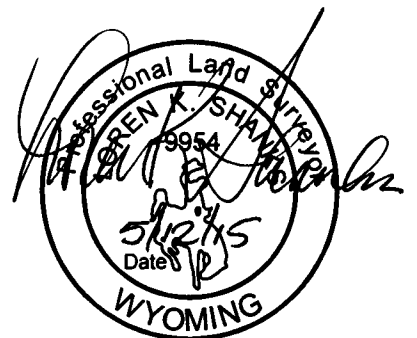
85 South 200 East

Vernal, Utah 84078

Telephone Number: 435-789-1017

This corner record was prepared by me or under my direction and supervision.

SEAL & SIGNATURE



CORNER COMMON TO 4 SECTIONS  
Corner Name: NORTHEAST CORNER OF SECTION 10 Section: 10 T 14N R 65W ; 6TH P.M. Cross Index No.: E-17  
SBRPEPLS/PLSW: March 1994 (CLCR...SJA)



RECP #: 670046

RECORDED 9/22/2015 AT 10:36 AM BK# 2465 PG# 54  
Debra K. Lathrop, CLERK OF LARAMIE COUNTY, WY PAGE 1 OF 1